



US00D563493S

(12) **United States Design Patent**  
Nelson et al.

(10) **Patent No.:** **US D563,493 S**

(45) **Date of Patent:** **\*\* Mar. 4, 2008**

(54) **ELASTOMERIC BALL HAVING  
PROTRUSIONS OF STACKED SPHERES**

(76) Inventors: **Webb T. Nelson**, 19180 144th Ave.,  
NE., Woodinville, WA (US) 98072;  
**Mark J. Chernick**, 19180 144th Ave.,  
NE., Woodinville, WA (US) 98072

(\*\*) Term: **14 Years**

(21) Appl. No.: **29/288,270**

(22) Filed: **Jun. 7, 2007**

(51) **LOC (8) Cl.** ..... **21-02**

(52) **U.S. Cl.** ..... **D21/707**

(58) **Field of Classification Search** ..... D21/386,  
D21/439, 440, 465, 466, 576, 597, 707-714;  
D30/160; D11/121, 124; D26/1, 2, 4, 125,  
D26/134; 446/5, 220-227, 267, 320, 385,  
446/486, 487, 490, 491; 428/4, 11, 12, 15-17,  
428/28; 473/569-614

See application file for complete search history.

(56) **References Cited**

**U.S. PATENT DOCUMENTS**

1,329,615 A \* 2/1920 Langfelder ..... 428/11  
2,234,835 A \* 3/1941 Sexton ..... 428/11  
D164,782 S \* 10/1951 Librizzi ..... D26/2  
D187,447 S \* 3/1960 Jolly ..... D27/127

D301,161 S \* 5/1989 Dunse ..... D21/707  
D368,502 S \* 4/1996 Liao ..... D21/707  
D378,536 S \* 3/1997 Fireman et al. .... D21/707  
D431,848 S \* 10/2000 Hubbard ..... D21/713  
6,241,572 B1 \* 6/2001 Braginsky ..... 446/85  
D519,588 S \* 4/2006 Carbonero ..... D21/707  
D535,341 S \* 1/2007 Chernick et al. .... D21/707  
D551,307 S \* 9/2007 Chernick et al. .... D21/707  
2001/0031677 A1 \* 10/2001 Coleman et al. .... 473/569

\* cited by examiner

*Primary Examiner*—Catherine Tuttle

(74) *Attorney, Agent, or Firm*—Lamorte & Associates P.C.

(57) **CLAIM**

The ornamental design for an elastomeric ball having protrusions of stacked spheres, as shown and described.

**DESCRIPTION**

FIG. 1 is a front view of an elastomeric ball having protrusions of stacked spheres;

FIG. 2 is a rear view thereof;

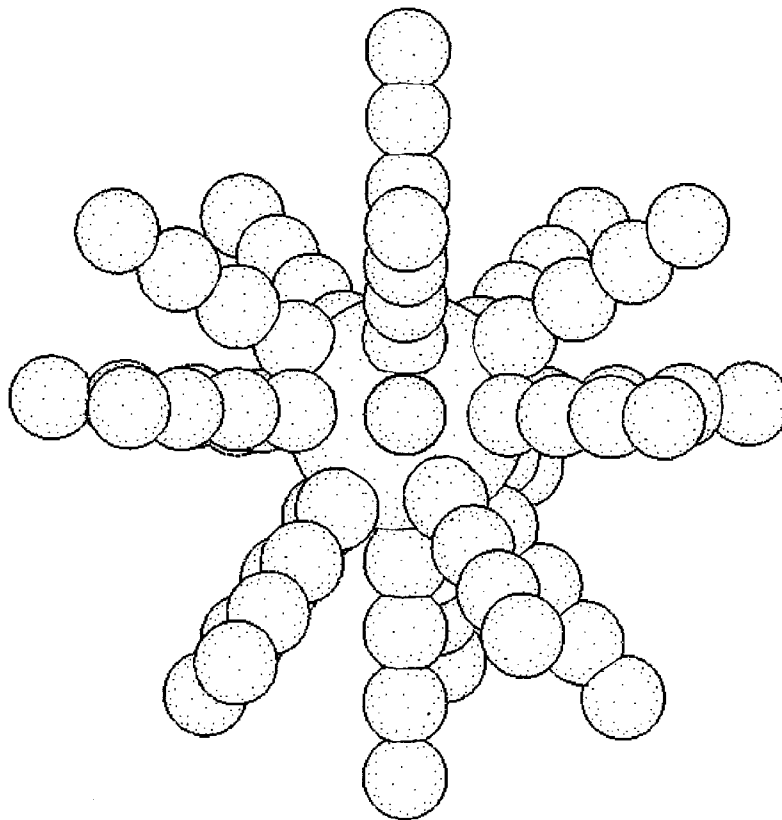
FIG. 3 is a left side view thereof;

FIG. 4 is a right side view thereof;

FIG. 5 is a top view thereof; and,

FIG. 6 is a bottom view thereof.

**1 Claim, 6 Drawing Sheets**



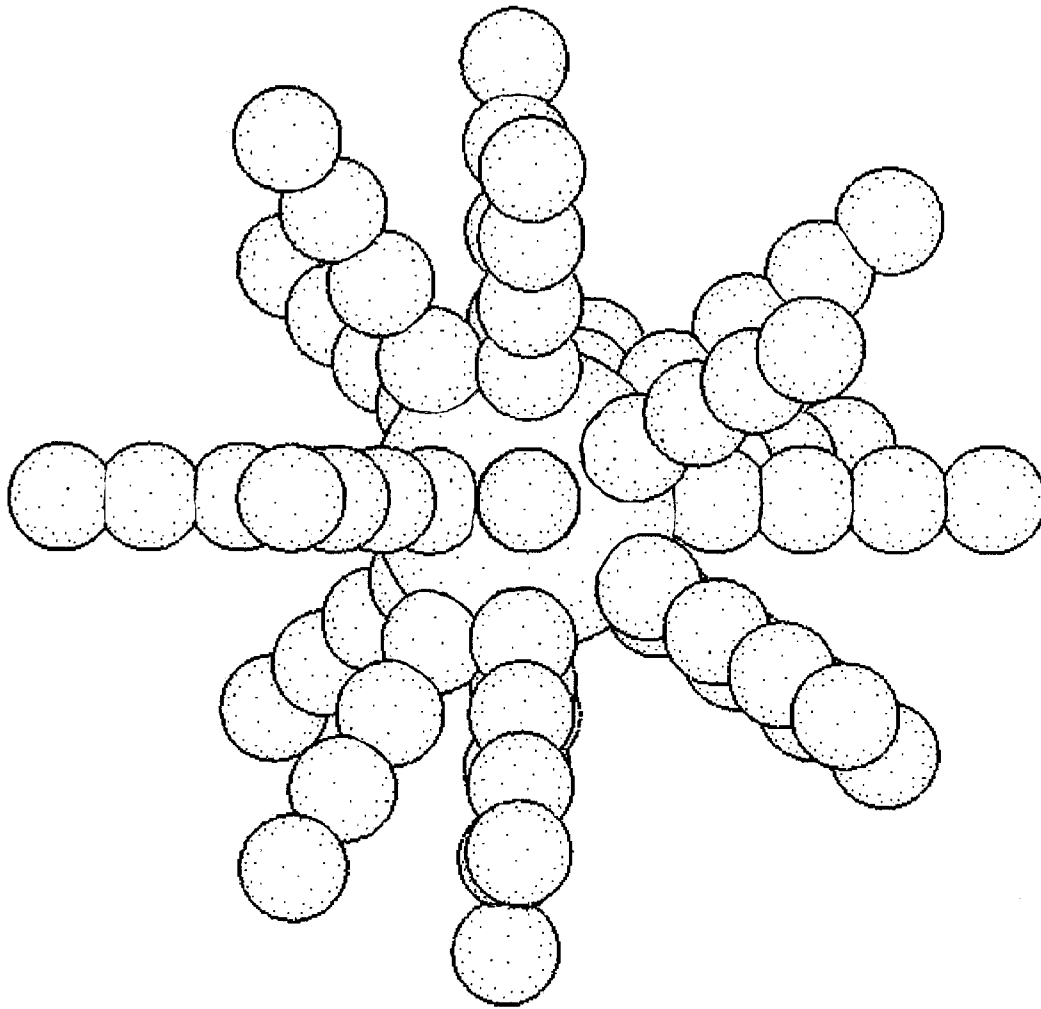


FIG. 1

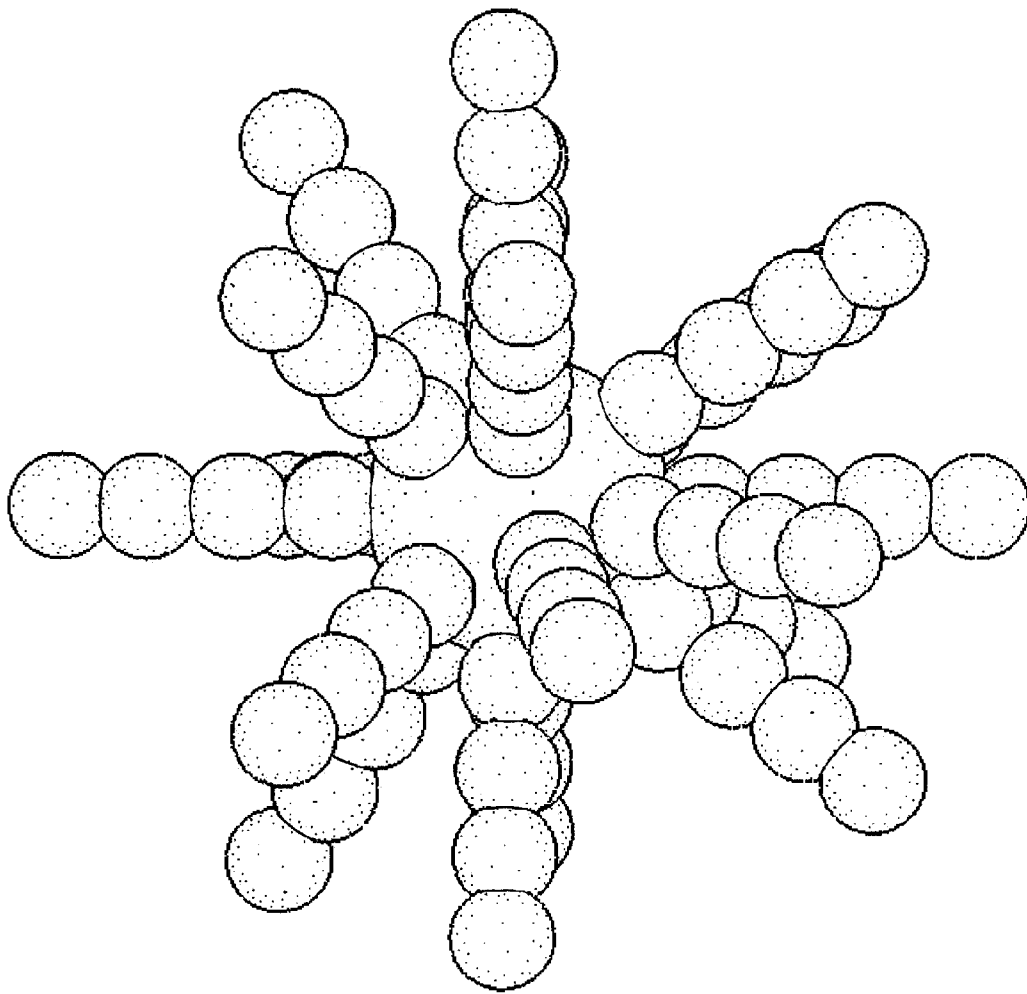


FIG. 2

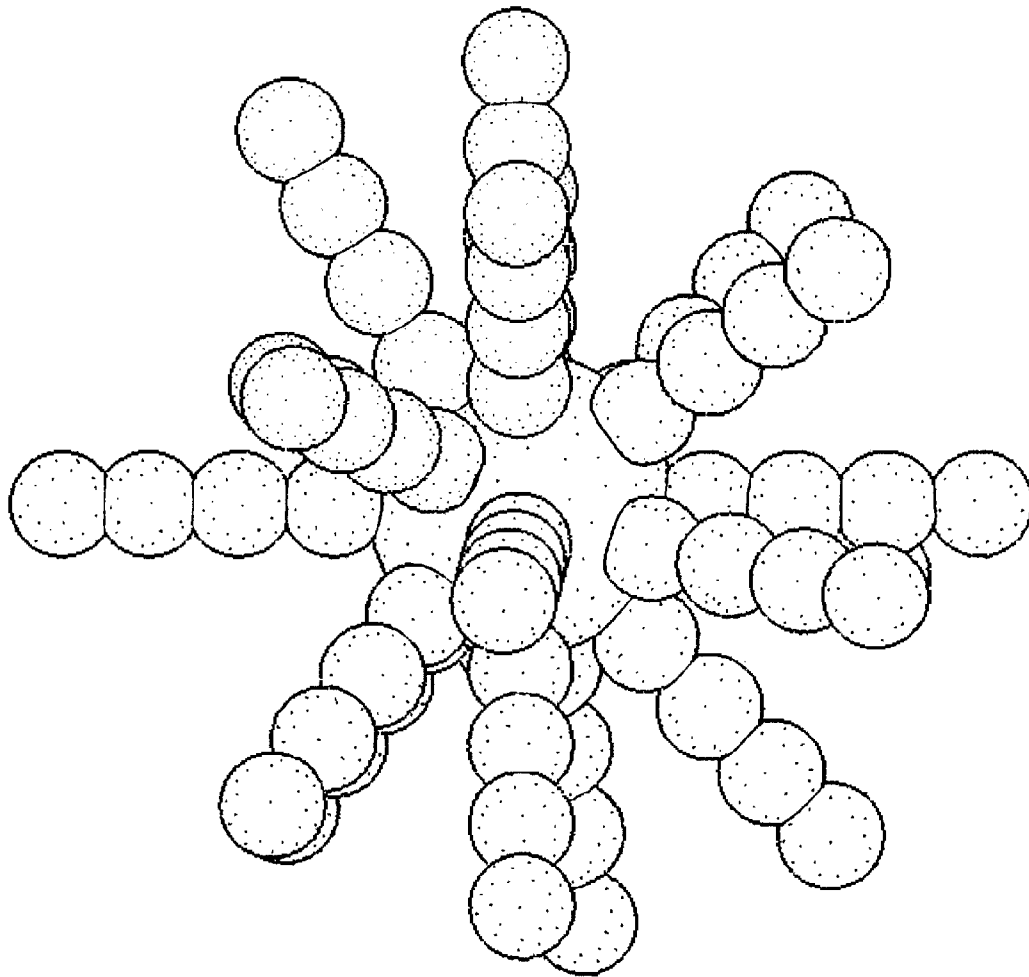


FIG. 3

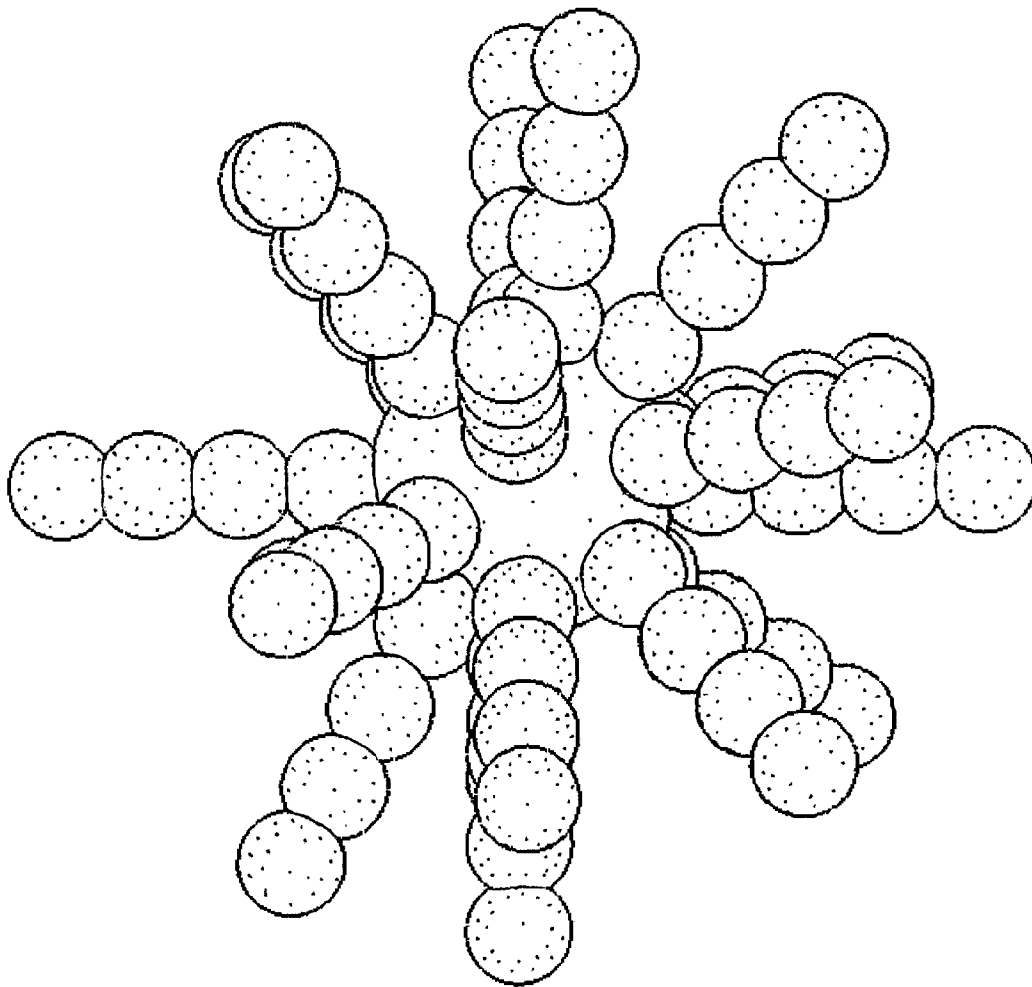


FIG. 4

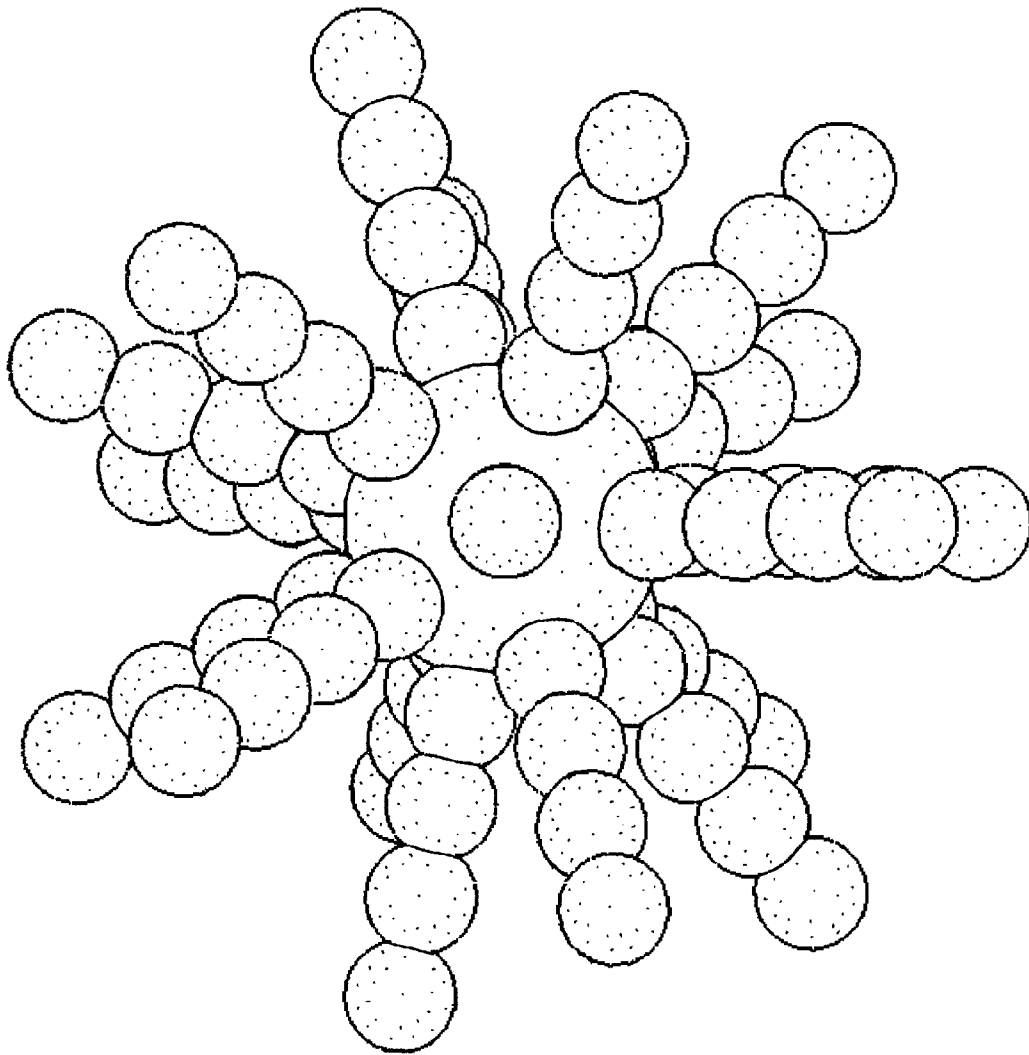


FIG. 5

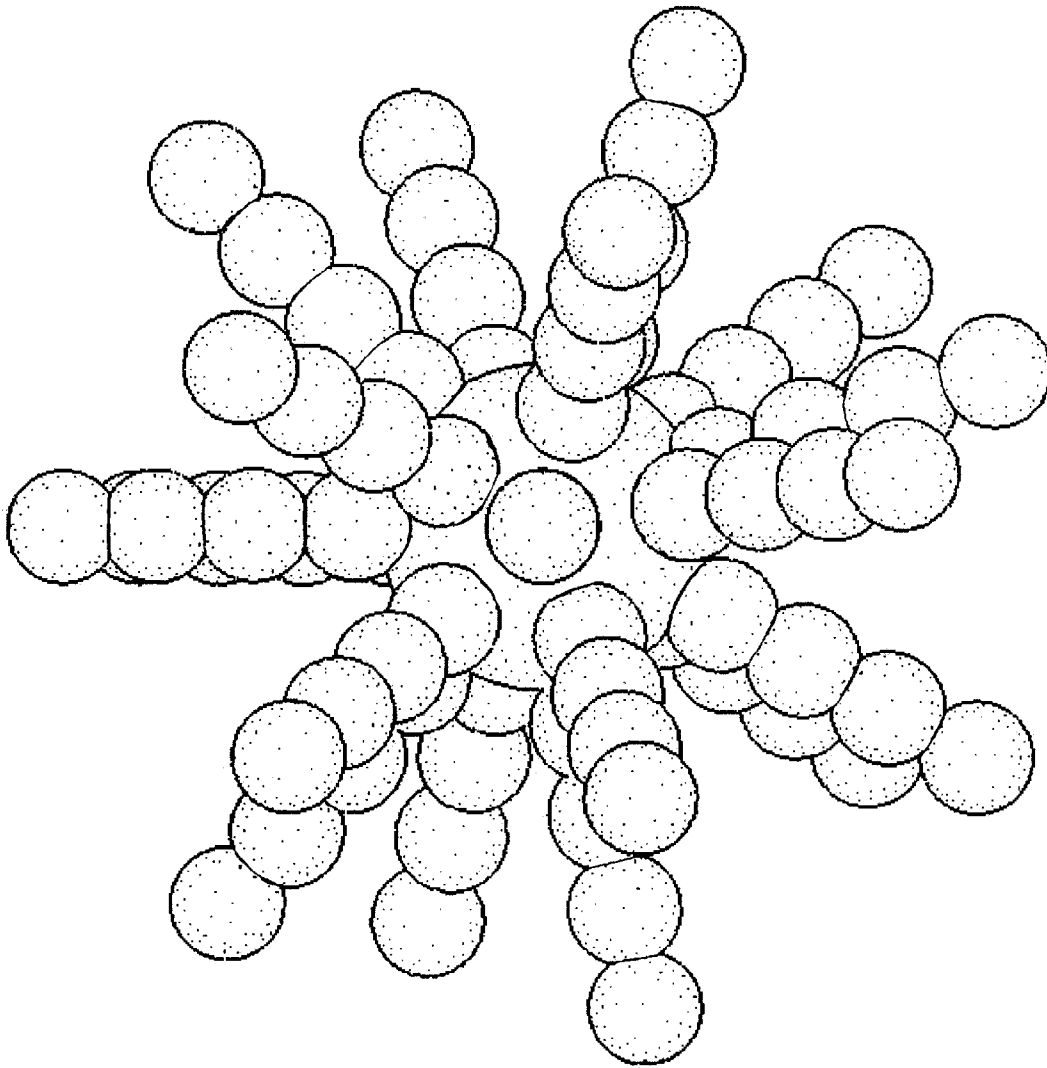


FIG. 6